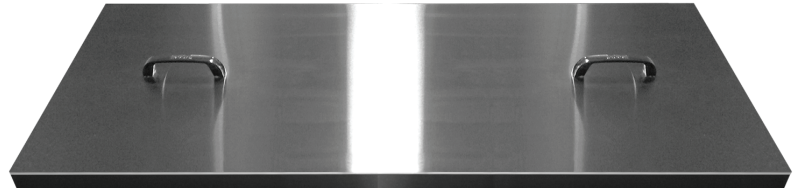
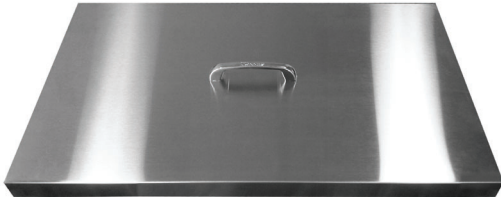


REFRIGERATOR MANUFACTURER
Turbo air
 more durable, efficient, beautiful

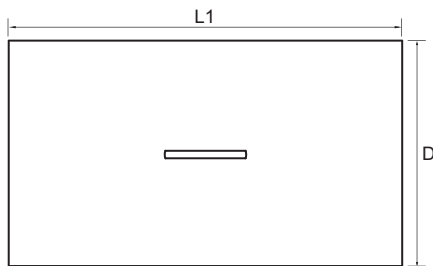
4184 E. Conant St.
 Long Beach, CA 90808
 Tel. 310-900-1000
 Fax. 310-900-1077
www.turboairinc.com

| | |
|-----------------|-------|
| Project : | |
| Model # : | |
| Item # : | Qty : |
| Available W/H : | |
| Approval : | |

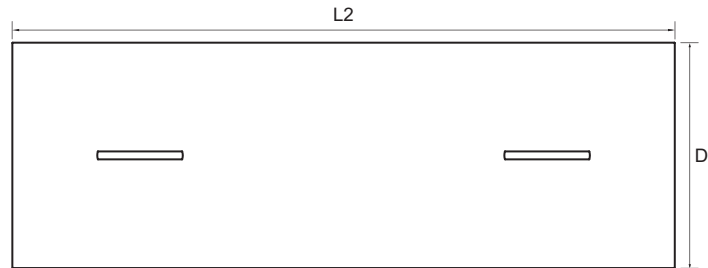
Removable Covers for Sandwich / Salad Units



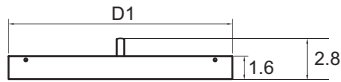
PLAN VIEW



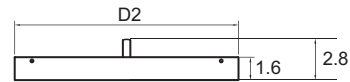
Plan View



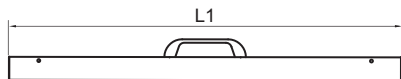
Plan View



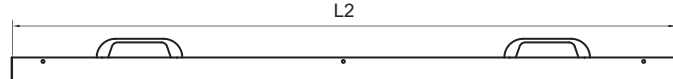
Side View



Side View



Front View



Front View

| 28"(L) Prep Table | 36"(L) Prep Table | 48"(L) Prep Table | 60"(L) Prep Table | 72"(L) Prep Table |
|---|--|---|---|---|
| Item No. RCT-28 (1ea) | Item No. RCT-36 (1ea) | Item No. RCT-48 (1ea) | Item No. RCT-60 (1ea) | Item No. RCT-72-L (1ea for left) RCT-72-R (1ea for right) |
| Dimension (Inch) 26.9(L1) x 15.4(D1) x 2.8(H) | Dimension 33.3(L2) x 15.4(D1) x 2.8(H) | Dimension 43.3(L2) x 14.6(D2) x 2.8(H) | Dimension 57.1(L1) x 14.6(D2) x 2.8(H) | Dimension 36.3(L2) x 14.6(D1) x 2.8(H) 29.4(L1) x 14.6(D1) x 2.8(H) |
| Weight (Lbs.) 7.5 | Weight (Lbs.) 8.5 | Weight (Lbs.) 12 | Weight (Lbs.) 15.5 (ea) | Weight (Lbs.) 8.5 (left) / 7.5 (right) |
| Applicable Models PST-28-N / MST-28-N TST-28SD-N TST-48SD-08S-N TST-60SD-08S-N EST-28-N6 | Applicable Models MST-36-N6 TST-36SD-N6 EST-36-N6 | Applicable Models PST-48-N MST-48-N TST-48SD-N TST-72SD-12S-N EST-48-N | Applicable Models PST-60-N MST-60-N TST-60SD-N EST-60-N | Applicable Models PST-72-N MST-72-N TST-72SD-N TST-72SD-08S-N EST-72-N |